



WOOD & PELLET PRODUCTS










Value. Efficiency. Promise.
Entrust your home to Hearthstone.



Enduring Value

A Hearthstone speaks of quality and commitment. Integrating superior materials and high-end design, a Hearthstone provides you with value, efficiency, and promise. We handcraft each Hearthstone with assurance and commitment to meet the highest standards. Time-tested craftsmanship, the finest materials, and advanced heating technology guarantee that your Hearthstone is clean-burning and efficient.
That's value.

SOAPSTONE

- 
Equinox
6
- 
Mansfield
8
- 
Phoenix
10
- 
Heritage
12
- 
Homestead
14
- 
Castleton
16
- 
Tribute
18


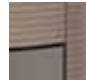
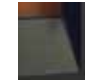
CAST IRON

- 
Manchester
20
- 
Shelburne
22
- 
Craftsbury
24

INSERTS & FIREPLACES

- 
Clydesdale
26
- 
Morgan
28
- 
Montgomery
30


CONTEMPORARY

- 
Bari
32
- 
Lima
34
- 
Tula
36

PELLET

- 
Manchester Pellet
38
- 
Heritage Pellet
40

COOK

- 
Deva
42



Every Hearthstone soapstone stove is signed by the stove builder.



True Efficiency

The efficiency is found in our soft, enduring warmth. This long-lasting warmth is HeatLife – the ability to emanate a steady, radiant heat. Hearthstone HeatLife is superior. A Hearthstone generates a consistent heat that keeps your home warm longer.

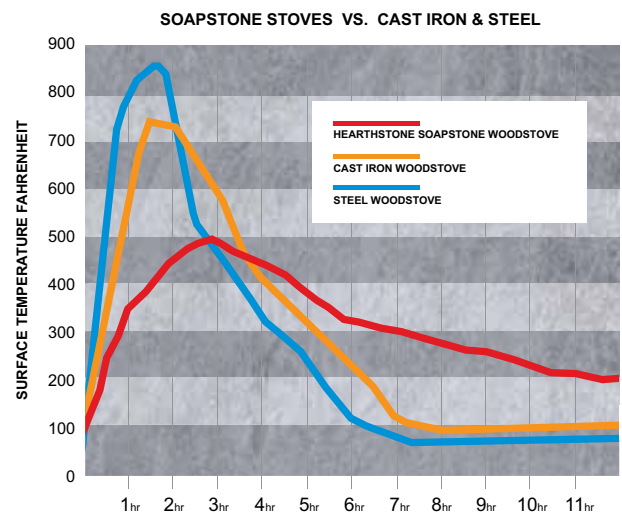
The secret is in soapstone – soapstone naturally absorbs the heat of your fire, stores that heat, and then radiates it evenly throughout your home. We use soapstone so you enjoy soft, stable, and efficient heat - long after the fire is out.

We balance the natural heating qualities of soapstone with our clean-burning secondary combustion system. We use a passive, self-regulating system that ensures your Hearthstone burns as clean as possible, at whatever rate you're burning.

All Hearthstone wood and pellet stoves are EPA certified and are among the cleanest burning – if not the cleanest burning – biomass fuel models available.

No fuss. Little maintenance. With one lever, you control the burn rate. Your Hearthstone burns cleanly and effectively on any setting. Ultimately, you use less wood and enjoy a relaxing heat.

That's efficiency.



Our Promise

For more than 35 years, dedicated Vermont craftsmen have been committed to building quality stoves. It's our commitment – our guarantee – that each Hearthstone is built with integrity in the Hearthstone tradition. Hearthstone continues to meet its promise of value, efficiency, and unmatched appeal. Your Hearthstone will serve you faithfully for years to come.

That's our promise.



EQUINOX

SOAPSTONE WOODSTOVE



Equinox featured in Matte Black with left side door.



FINISH OPTIONS:



Painted Matte Black



Removable ash pan with lid.

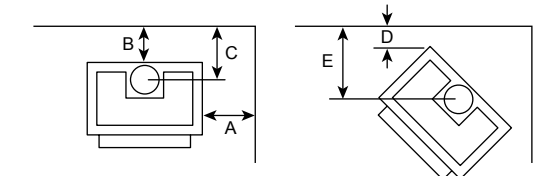
EQUINOX 8000 FEATURES AND BENEFITS

- **Right or left side load door** – flexible installation
- **Oven-style side load door** – helps keep ashes in firebox
- **Top or rear flue exit** – flexible installation
- **Single lever stove control** – easy operation, consistent performance
- **Non-catalytic combustion system** – clean burning, efficient, reduces creosote build-up
- **Removable ash tray** – easy to clean, easily accessible

SPECIFICATIONS

- Heats up to3,500 sq ft
- Firebox Capacity4.0 cu ft
- SizeUp to 120,000 BTUs
- EPA Certified3.1 gph
- Efficiency82% LHV
- Burn TimeUp to 12 hours
- HeatLifeUp to 16 hours
- Maximum Log Length25" Left-Right, 20" Front-Back
- Flue Exit & DiameterTop or Rear - 8"
- Ash PanIncluded
- Side Load DoorChoose Left or Right
- Side Door Lock KitOptional
- Convection BlowerOptional
- Rear Heat ShieldOptional
- Outside Air AdapterOptional
- Actual Weight689 lbs.
- Alcove CertifiedYes
- Mobile Home CertifiedYes

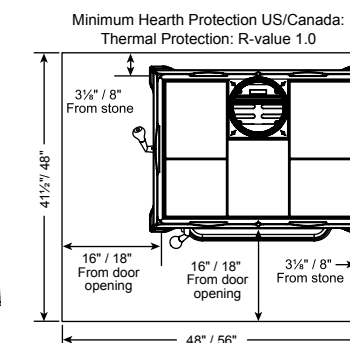
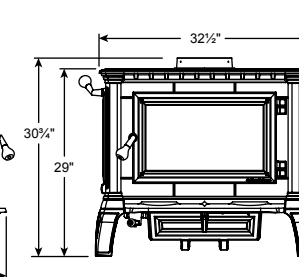
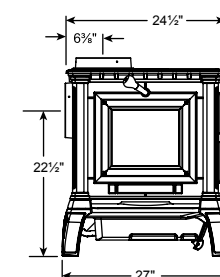
CLEARANCES TO COMBUSTIBLE MATERIALS



	Single-wall pipe, no rear heat shield	Double-wall pipe, with rear heat shield
A	21"	19"
B	21"	6"
C	26 ³ / ₄ "	11 ¹ / ₄ "
D	15"	13 ¹ / ₂ "
E	30 ³ / ₄ "	28 ³ / ₄ "

A POWERHOUSE TO HEAT THE MOST GENEROUS LIVING SPACES

Our largest soapstone stove, the Equinox possesses the strength to heat your entire home. Pack the generous firebox and enjoy an unmatched, long-lasting HeatLife – true of only a Hearthstone.



Minimum Hearth Protection US/Canada:
Thermal Protection: R-value 1.0

MANSFIELD

SOAPSTONE WOODSTOVE



Mansfield featured in Matte Black.



FINISH OPTIONS:



Matte Black



Brown Majolica Enamel



Mansfield featured in Brown Majolica Enamel, shown with soapstone steamer (90-99112).

MANSFIELD 8012 FEATURES AND BENEFITS

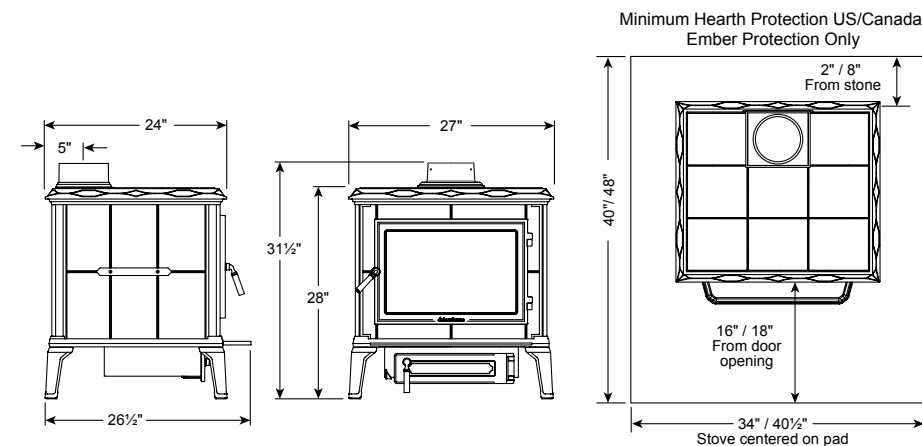
- **Deep firebox** – easy to load front-to-back, and side-to-side
- **Single lever stove control** – easy operation, consistent performance
- **Non-catalytic combustion system** – clean burning, efficient, reduces creosote build-up
- **Removable ash tray** – easy to clean, easily accessible

SPECIFICATIONS

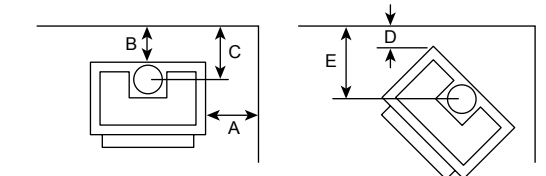
- Heats up to2,500 sq ft
- Firebox Capacity3.2 cu ft
- SizeUp to 80,000 BTUs
- EPA Certified2.9 gph
- Efficiency77.4%
- Burn TimeUp to 10 hours
- HeatLifeUp to 14 hours
- Maximum Log Length21" Left-Right, 19" Front-Back
- Flue Exit & DiameterTop - 6"
- Ash Pan.....Included
- Convection BlowerOptional
- Rear Heat Shield.....Optional
- Outside Air AdapterIncluded
- Actual Weight550 lbs.
- Alcove CertifiedYes
- Mobile Home CertifiedYes

RELAXED GOOD LOOKS THAT DELIVER LASTING WHOLE-HOUSE WARMTH

A true workhorse, the Mansfield is a top-seller among hearth professionals. Providing up to 14 hours of sustained heat on a single load of wood, the Mansfield delivers comfortable warmth throughout your home.



CLEARANCES TO COMBUSTIBLE MATERIALS



	Single-wall pipe, no rear heat shield	Double-wall pipe, with rear heat shield
A	18"	18"
B	19"	8"
C	24"	13"
D	14"	14"
E	27"	27"

PHOENIX

SOAPSTONE WOODSTOVE



Phoenix featured in Matte Black and Polished Soapstone.



FINISH OPTIONS:



Matte Black



Brown Majolica Enamel



Phoenix featured with Brown Majolica Enamel finish.

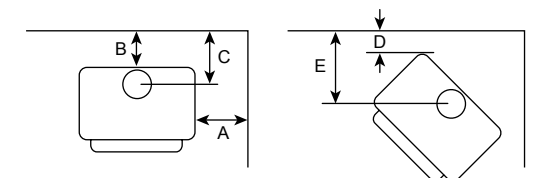
PHOENIX 8612 FEATURES AND BENEFITS

- **Cast iron and soapstone hybrid construction** – quick and lasting heat
- **45 degree flue collar** – flexible installation (freestanding or hearthmount stove)
- **Single lever stove control** – easy operation, consistent performance
- **Non-catalytic combustion system** – clean burning, efficient, reduces creosote build-up
- **Removable ash tray** – easy to clean, easily accessible

SPECIFICATIONS

Heats up to.....	2,000 sq ft
Firebox Capacity.....	2.2 cu ft
Size.....	60,000 BTUs
EPA Certified.....	2.4 gph
Efficiency.....	75% LHV
Burn Time.....	Up to 8 hours
HeatLife.....	Up to 12 hours
Maximum Log Length.....	21"
Flue Exit & Diameter.....	Reversible 45° collar - 6"
Ash Pan.....	Included
Rear Heat Shield.....	Optional
Outside Air Adapter.....	Optional
Actual Weight.....	425 lbs.
Alcove Certified.....	Yes
Mobile Home Certified.....	Yes

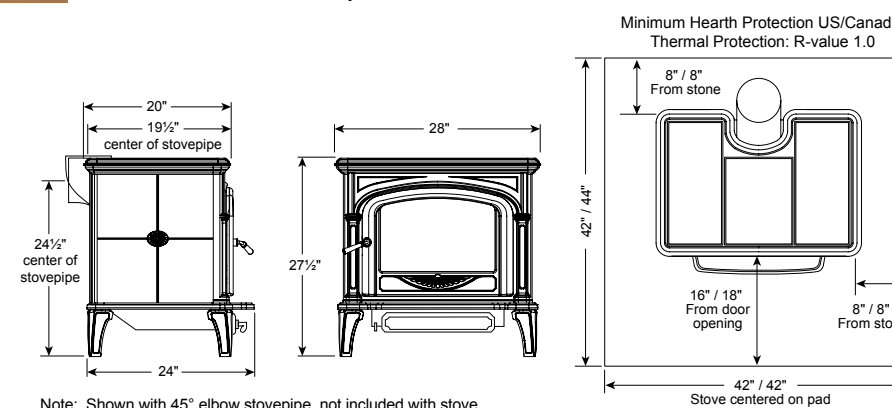
CLEARANCES TO COMBUSTIBLE MATERIALS



	Single-wall pipe, no rear heat shield	Double-wall pipe, with rear heat shield
A	20"	16"
B	25"	13"
C	25½"	13½"
D	18"	12"
E	27¼"	21¼"

QUICK HEAT OF CAST IRON RADIANT HEAT OF SOAPSTONE

Highlighting a hybrid design, the Phoenix combines the quick-heating qualities of a solid cast iron front and back with the radiant heat of natural soapstone for quick, lasting warmth. Compact, yet powerful, the Phoenix warms your midsize home for hours.



Note: Shown with 45° elbow stovepipe, not included with stove.

HERITAGE

SOAPSTONE WOODSTOVE

**NEW
PRODUCT
2014**



Heritage featured in Matte Black, shown with optional ash pan and rear heat shield.



FINISH OPTIONS:



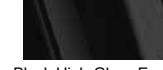
Matte Black



Brown Majolica Enamel



Seafoam Majolica Enamel



Black High-Gloss Enamel



Heritage featured in Matte Black.

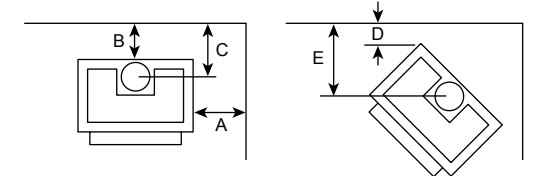
HERITAGE 8022 FEATURES AND BENEFITS

- **Right or left side door / reversible front door** – flexible installation
- **Oven-style side load door** – helps keep ashes in firebox
- **Top or rear flue exit** – flexible installation
- **Single lever stove control** – easy operation, consistent performance
- **Non-catalytic combustion system** – clean burning, efficient, reduces creosote build-up
- **Optional removable ash tray** – easy to clean, easily accessible

SPECIFICATIONS

Heats up to	1,900 sq ft
Firebox Capacity	2.3 cu ft
Size	Up to 55,000 BTUs
EPA Certified	2.8 gph
Efficiency	81% LHV
Burn Time	Up to 8 hours
HeatLife	Up to 12 hours
Maximum Log Length	21"
Flue Exit & Diameter	Top or Rear - 6"
Ash Pan	Optional
Side Load Door	Included
Convection Blower	Optional
Rear Heat Shield	Optional
Outside Air Adapter	Optional
Actual Weight	475 lbs.
Alcove Certified	Yes
Mobile Home Certified	Yes

CLEARANCES TO COMBUSTIBLE MATERIALS

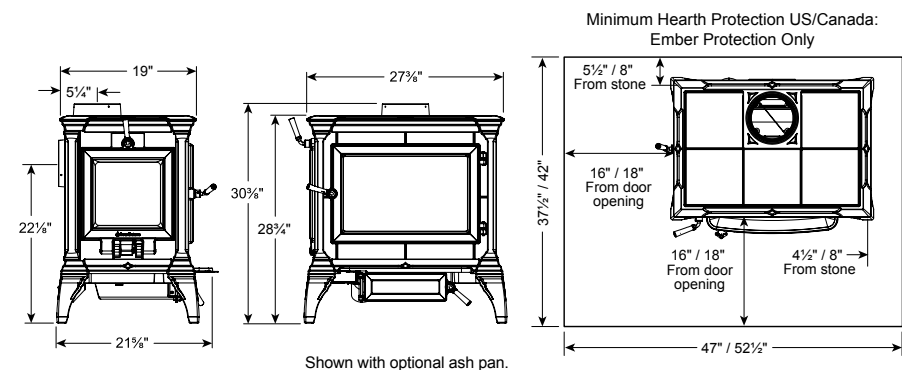


	Single-wall pipe, no rear heat shield	Double-wall pipe, with rear heat shield
A	17"	15" *
B	16"	7"
C	21"	12"
D	12"	11"
E	25½"	24½"

* Non-door side -or- locked side door

OUR SIGNATURE PRODUCT THE HERITAGE DELIVERS

Crafted in the tradition of Hearthstone innovation, the Heritage provides the enduring comfort of soapstone with side-loading capability and sustained heat for up to 12 hours. Our heirloom quality product will be the focal point of the room.



HOMESTEAD

SOAPSTONE WOODSTOVE



Freestanding Homestead featured with Brown Majolica Enamel finish.



Hearthmount Homestead featured in Matte Black with hearth surround.

FINISH OPTIONS:



Matte Black



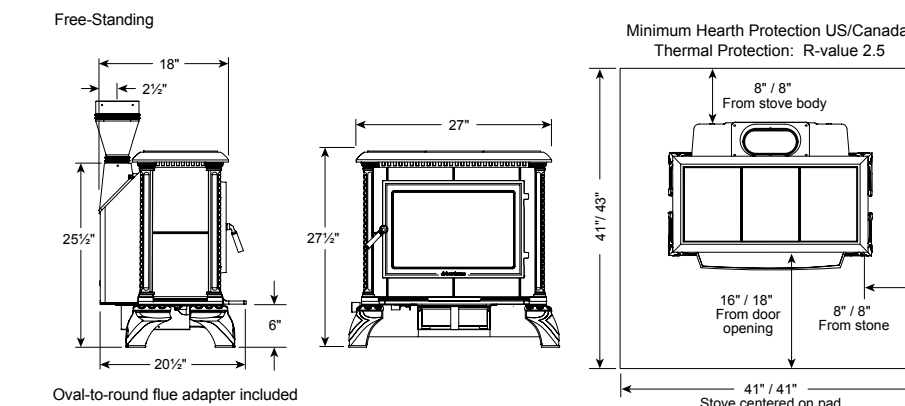
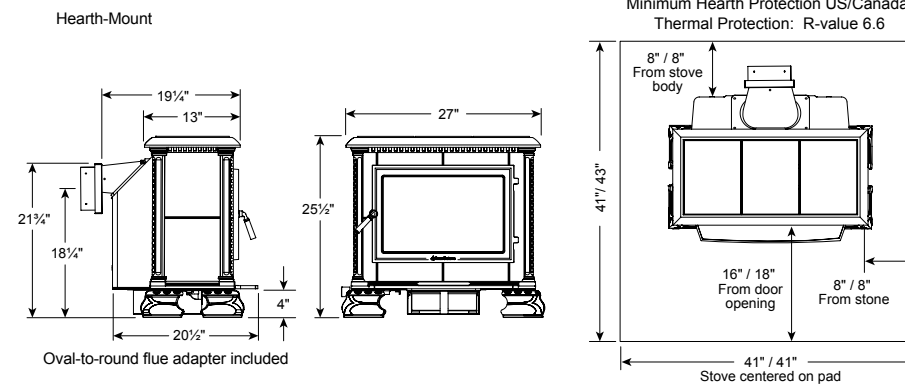
Brown Majolica Enamel

HOMESTEAD 8570 FEATURES AND BENEFITS

- **Flexible installation** – available as freestanding or hearthmount stove
- **Low flue exit** – uniquely designed as an 'outsert'
- **Single lever stove control** – easy operation, consistent performance
- **Non-catalytic combustion system** – clean burning, efficient, reduces creosote build-up
- **Removable ash tray** – easy to clean, easily accessible

SPECIFICATIONS

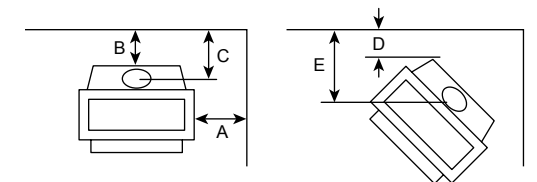
Heats up to.....	1,800 sq ft
Firebox Capacity.....	2.0 cu ft
Size.....	Up to 50,000 BTUs
EPA Certified.....	1.9 gph
Efficiency.....	83.5% LHV
Burn Time.....	Up to 8 hours
HeatLife.....	Up to 12 hours
Maximum Log Length.....	21"
Flue Exit & Diameter.....	Top or Rear - 6"
Ash Pan.....	Included
Convection Blower.....	Optional
Rear Heat Shield.....	Optional
Outside Air Adapter.....	Optional
Hearth Surround.....	Optional
Actual Weight.....	380 lbs.
Alcove Certified.....	Yes
Mobile Home Certified.....	Yes



OUR CLEANEST BURNING STOVE FREESTANDING OR HEARTH MOUNT

Efficient and versatile, the Homestead keeps your midsize home cozy. One of the most efficient woodstoves on the market, the Homestead lends gentle radiant heat for lasting warmth you'll enjoy all day long.

CLEARANCES TO COMBUSTIBLE MATERIALS



	Single-wall pipe, no rear heat shield		Double-wall pipe, with rear heat shield	
	H-M	F-S	H-M	F-S
A	23"	23"	16"	16"
B	26"	26"	7"	7"
C	N/A	28 1/2"	N/A	9 1/2"
D	18"	18"	12"	12"
E	N/A	27 1/4"	N/A	21 1/4"

CASTLETON

SOAPSTONE WOODSTOVE



Castleton featured with Brown Majolica Enamel finish.



FINISH OPTIONS:



Matte Black



Brown Majolica Enamel

Castleton featured in Matte Black.



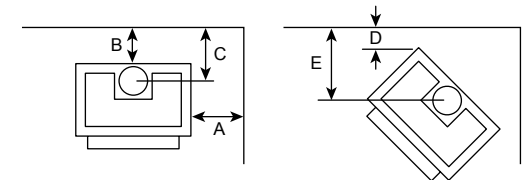
CASTLETON 8030 FEATURES AND BENEFITS

- **Cast iron interior impact plates** – protect the soapstone when loading the stove
- **Top or rear flue exit** – flexible installation
- **Single lever stove control** – easy operation, consistent performance
- **Non-catalytic combustion system** – clean burning, efficient, reduces creosote build-up

SPECIFICATIONS

Heats up to	1,500 sq ft
Firebox Capacity	1.9 cu ft
Size	Up to 45,000 BTUs
EPA Certified	2.7 gph
Efficiency	78% LHV
Burn Time	Up to 8 hours
HeatLife	Up to 10 hours
Maximum Log Length	18"
Flue Exit & Diameter	Top or Rear - 6"
Rear Heat Shield	Optional
Convection Blower	Optional
Outside Air Adapter	Optional
Actual Weight	464 lbs.
Alcove Certified	Yes
Mobile Home Certified	Yes

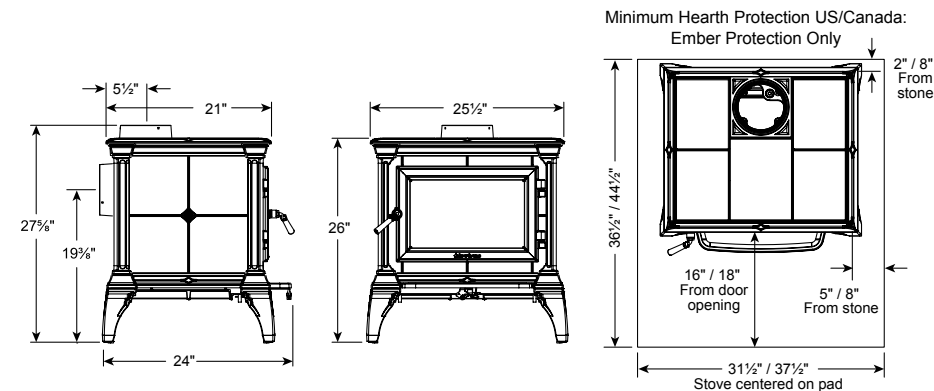
CLEARANCES TO COMBUSTIBLE MATERIALS



	Single-wall pipe, no rear heat shield	Double-wall pipe, with rear heat shield
A	20"	15"
B	18"	6"
C	23"	11"
D	10"	10"
E	23"	23"

CLASSIC STYLE WITH THE ESSENTIALS

The Castleton gives you the heating qualities of soapstone and the detailing of fine cast iron. Designed to maintain a warm, consistent heat, the Castleton is simple, reliable, affordable, and beautiful.



Minimum Hearth Protection US/Canada:
Ember Protection Only

2" / 8"
From stone

16" / 18"
From door opening

5" / 8"
From stone

31 1/2" / 37 1/2"
Stove centered on pad

TRIBUTE

SOAPSTONE WOODSTOVE



Tribute featured with Seafoam Majolica Enamel finish, shown with optional rear heat shield.



FINISH OPTIONS:



Matte Black



Brown Majolica Enamel



Seafoam Majolica Enamel



Tribute featured with Brown Majolica Enamel finish.

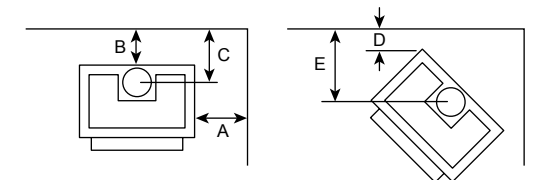
TRIBUTE 8040 FEATURES AND BENEFITS

- **Compact size** – adapts to smaller spaces
- **Single lever stove control** – easy operation, consistent performance
- **Non-catalytic combustion system** – clean burning, efficient, reduces creosote build-up

SPECIFICATIONS

Heats up to	1,000 sq ft
Firebox Capacity	1.2 cu ft
Size	Up to 36,000 BTUs
EPA Certified	3.0 gph
Efficiency	80% LHV
Burn Time	Up to 5 hours
HeatLife	Up to 7 hours
Maximum Log Length	16"
Flue Exit & Diameter	6" top exit
Convection Blower	Optional
Rear Heat Shield	Optional
Spark Screen	Optional
Outside Air Adapter	Optional
Actual Weight	318 lbs.
Alcove Certified	Yes
Mobile Home Certified	Yes

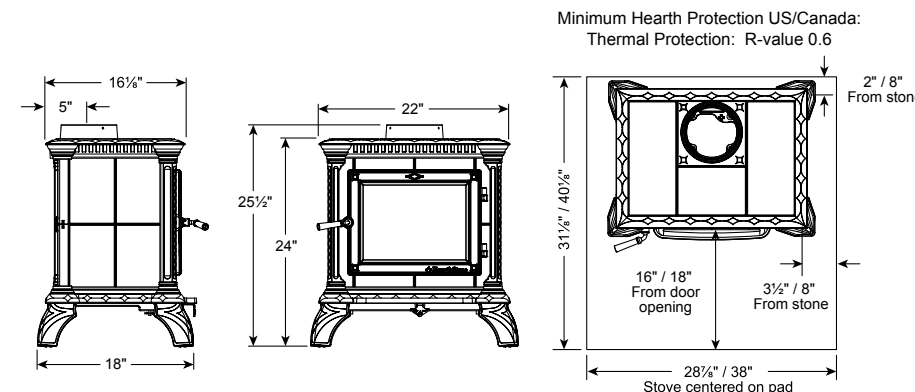
CLEARANCES TO COMBUSTIBLE MATERIALS



	Single-wall pipe, no rear heat shield	Double-wall pipe, with rear heat shield
A	16½"	16½"
B	19"	8"
C	24"	13"
D	17"	7"
E	28½"	18½"

BEAUTIFUL SOAPSTONE, SCALED TO WARM A MORE MODERATE SPACE

Perfect for a large room or a smaller home, the Tribute will burn for up to 5 hours – so you enjoy 7 hours of HeatLife. The Tribute delivers Hearthstone quality and efficiency at an attractive price point.



Minimum Hearth Protection US/Canada:
Thermal Protection: R-value 0.6

2" / 8"
From stone

16" / 18"
From door
opening

3½" / 8"
From stone

28½" / 38"
Stove centered on pad

MANCHESTER

CAST IRON WOODSTOVE



Manchester featured with Brown Majolica Enamel finish.



FINISH OPTIONS:



Matte Black



Brown Majolica Enamel



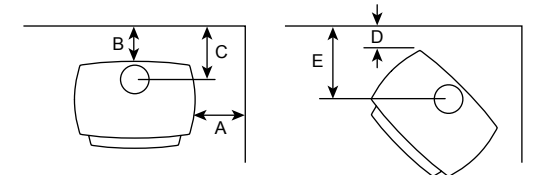
MANCHESTER 8360 FEATURES AND BENEFITS

- **Soapstone-lined interior** – extended HeatLife
- **Right or left side door** – flexible installation
- **Oven-style side door** – helps keep ashes in firebox
- **Convection air channel with heat exchanger** – encourages airflow, moves heat throughout home
- **Decorative cast rear heat shield** – Finished look from any angle
- **Top or rear flue exit** – flexible installation
- **Single lever stove control** – easy operation, consistent performance
- **Non-catalytic combustion system** – clean burning, efficient, reduces creosote build-up
- **Removable ash tray** – easy to clean, easily accessible

SPECIFICATIONS

Heats up to2,400 sq ft
 Firebox Capacity2.9 cu ft
 SizeUp to 78,000 BTUs
 EPA Certified3.0 gph
 Efficiency80% LHV
 Burn Time.....Up to 12 hours
 HeatLife.....Up to 14 hours
 Maximum Log Length24"
 Flue Exit & DiameterTop or Rear - 6"
 Ash Pan.....Included
 Convection BlowerOptional
 Side Load Door.....Choose Left or Right
 Rear Heat Shield.....Included
 Close Clearance Heat Shield.....Optional
 Outside Air AdapterOptional
 Actual Weight.....515 lbs.
 Alcove Certified.....Yes
 Mobile Home CertifiedYes

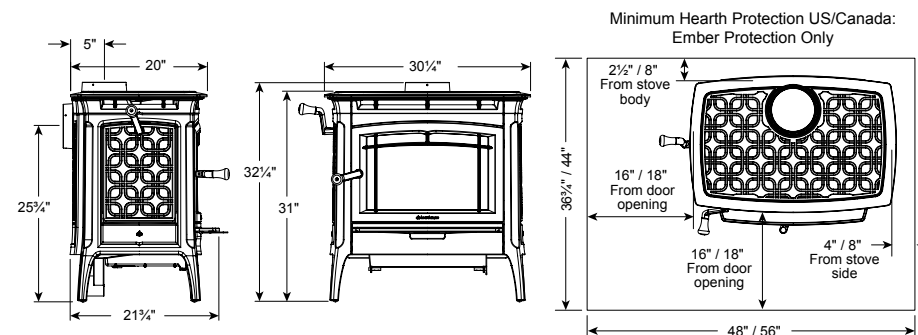
CLEARANCES TO COMBUSTIBLE MATERIALS



	Single-wall pipe, no close-clearance heat shield	Double-wall pipe, with close-clearance heat shield
A	18"	16"
B	16"	6"
C	21"	11"
D	9"	9"
E	21 1/4"	21 1/4"

FOR EFFICIENT, TOASTY WHOLE-HOME HEAT

Clean-burning, efficient, and versatile, the Manchester presents Hearthstone performance in cast iron style. Using a convection air system with an integrated cast iron heat exchanger, the Manchester provides extraordinary heating efficiency for your home. A soapstone-lined firebox captures and stores heat, so you enjoy a longer HeatLife.



Minimum Hearth Protection US/Canada:
Ember Protection Only

SHELBURNE

CAST IRON WOODSTOVE



Shelburne featured in Matte Black.



FINISH OPTIONS:



Matte Black



Brown Majolica Enamel



Basil Majolica Enamel



Shelburne featured with Basil Majolica Enamel finish.

SHELBURNE 8371 FEATURES AND BENEFITS

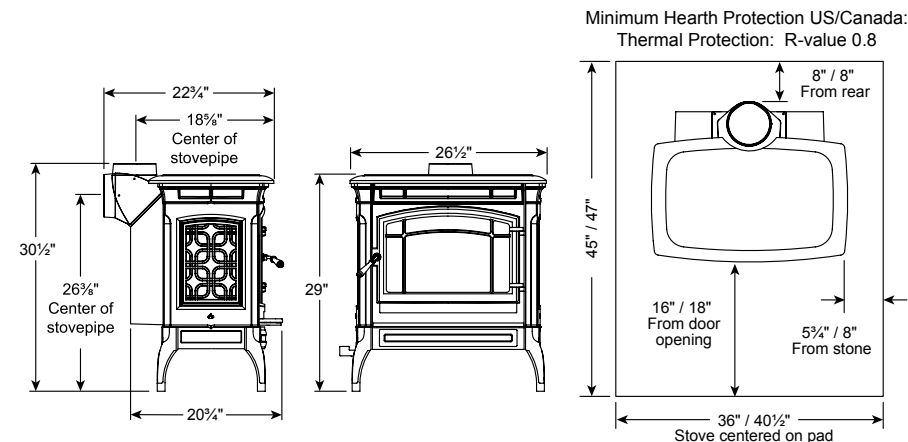
- **Soapstone-lined 2.0 cubic foot firebox** – extended HeatLife
- **Reversible top or rear flue** – flexible installation (freestanding or hearthmount)
- **Single lever stove control** – easy operation, consistent performance
- **Non-catalytic combustion system** – clean burning, efficient, reduces creosote build-up
- **Removable ash tray** – easy to clean, easily accessible

SPECIFICATIONS

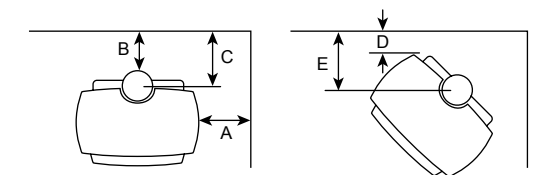
Heats up to	1,800 sq ft
Firebox Capacity	2.0 cu ft
Size	Up to 60,000 BTUs
EPA Certified	2.1 gph
Efficiency	80% LHV
Burn Time	Up to 8 hours
HeatLife	Up to 10 hours
Maximum Log Length	20"
Flue Exit & Diameter	Top or Rear - 6"
Ash Pan	Included
Convection Blower	Optional
Rear Heat Shield	Optional
Outside Air Adapter	Optional
Actual Weight	400 lbs.
Alcove Certified	Yes
Mobile Home Certified	Yes

THE TRADITIONAL BEAUTY OF CAST IRON IN YOUR HOME

A generous heating capacity allows the Shelburne to heat large areas of your home with ease. Traditional cast iron style is complemented by functionality: a soapstone-lined firebox extends the HeatLife; an oversized self-cleaning window makes loading easy and enhances your fire viewing. The Shelburne delivers Hearthstone quality in classic cast iron style.



CLEARANCES TO COMBUSTIBLE MATERIALS



	Single-wall pipe, no rear heat shield	Double-wall pipe, with rear heat shield
A	18"	21"
B	24"	12"
C	27 1/2"	15 1/2"
D	13"	6"
E	20"	13"

CRAFTSBURY

CAST IRON WOODSTOVE



Craftsbury featured with Basil Majolica Enamel finish.



FINISH OPTIONS:



Matte Black



Brown Majolica Enamel



Basil Majolica Enamel

CRAFTSBURY 8391 FEATURES AND BENEFITS

- **Soapstone-lined 1.5 cubic foot firebox** – extended HeatLife
- **Reversible top or rear flue** – flexible installation (freestanding or hearth-mount)
- **Single lever stove control** – easy operation, consistent performance
- **Non-catalytic combustion system** – clean burning, efficient, reduces creosote build-up
- **Removable ash tray** – easy to clean, easily accessible

SPECIFICATIONS

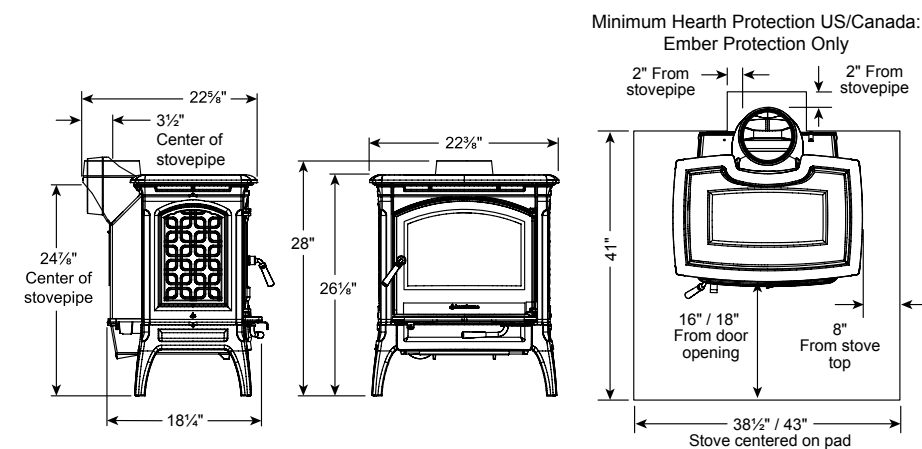
- Heats up to 1,300 sq ft
- Firebox Capacity 1.5 cu ft
- Size Up to 40,000 BTUs
- EPA Certified 3.8 gph
- Efficiency 81% LHV
- Burn Time Up to 6 hours
- HeatLife Up to 7 hours
- Maximum Log Length 17"
- Flue Diameter Top or Rear - 6"
- Ash Pan Included
- Convection Blower Optional
- Outside Air Adapter Optional
- Actual Weight 285 lbs.
- Alcove Certified Yes
- Mobile Home Certified Yes



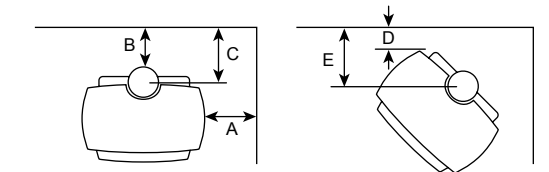
Craftsbury featured with Brown Majolica Enamel finish.

CLASSIC AND COMPACT WITH THE BENEFIT OF SOAPSTONE

Perfect for a large room or a smaller home, the Craftsbury heats with the classic good looks of embossed cast iron. Offering medium heating capacity and small dimensions, the Craftsbury is remarkably functional and adaptable.



CLEARANCES TO COMBUSTIBLE MATERIALS



	Single-wall pipe, no rear heat shield	Double-wall pipe, with rear heat shield
A	14"	14"
B	18"	6"
C	21"	9"
D	17"	10"
E	22 1/2"	15"

CLYDESDALE

WOOD INSERT



Clydesdale featured in Brown Majolica Enamel finish.



FINISH OPTIONS:



Matte Black



Brown Majolica Enamel

Clydesdale featured in Matte Black with surround base caps.



CLYDESDALE 8491

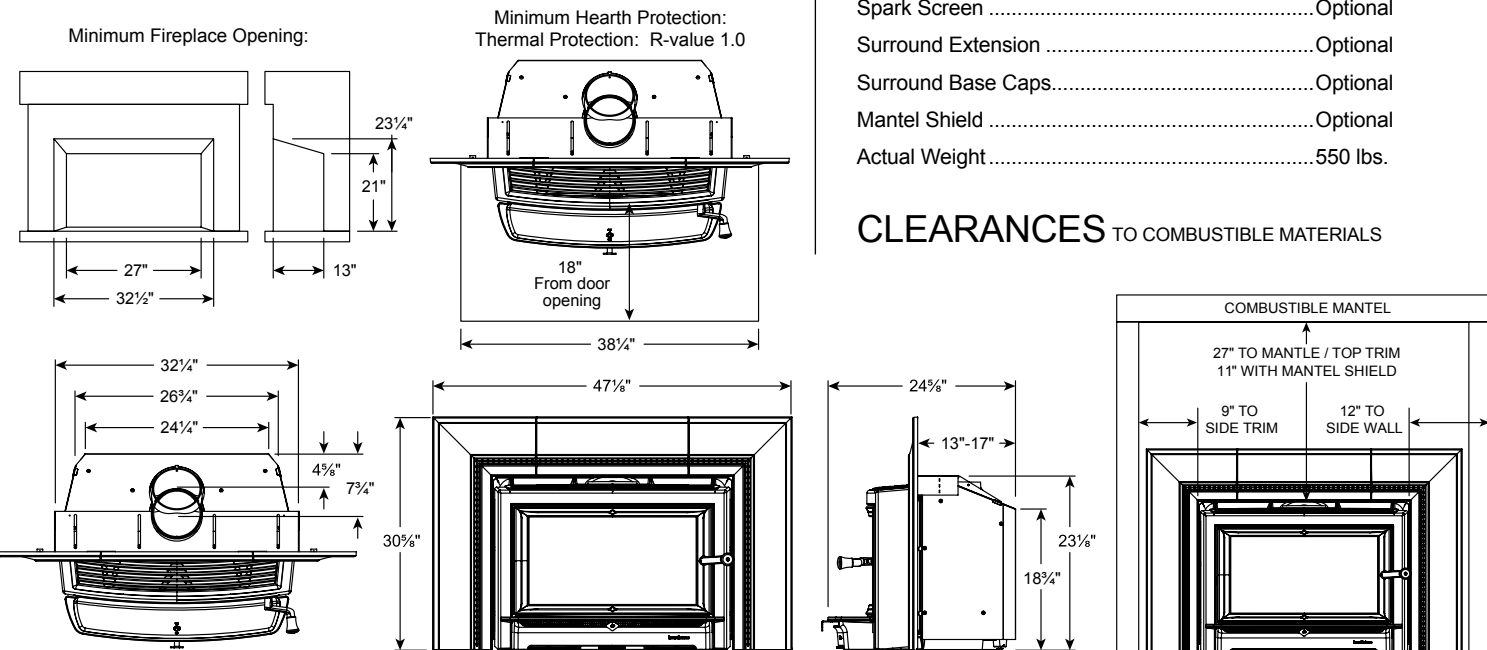
FEATURES AND BENEFITS

- **Soapstone-lined firebox** – extended HeatLife
- **Large front door** – easy loading and great view of the fire
- **Cast iron firebox** – unequalled durability and maximum heat output
- **Smooth firebox floor** – user friendly ash removal
- **Telescoping design** – allows a flush or extended hearth projection
- **Single lever stove control** – easy operation, consistent performance
- **Non-catalytic combustion system** – clean burning, efficient, reduces creosote build-up

SPECIFICATIONS

Heats up to	2,000 sq ft
Firebox Capacity	2.4 cu ft
Size	75,000 BTUs
EPA Certified	3.2 gph
Efficiency	79% (LHV)
Burn Time	Up to 10 hours
HeatLife	Up to 12 hours
Maximum Log Length	22"-24"
Flue Exit & Diameter	6", 2 positions
Convection Blower	Included
Spark Screen	Optional
Surround Extension	Optional
Surround Base Caps	Optional
Mantel Shield	Optional
Actual Weight	550 lbs.

CLEARANCES TO COMBUSTIBLE MATERIALS



TRANSFORM YOUR FIREPLACE INTO A COMFORT SOLUTION

The Clydesdale is the perfect solution for drafty, inefficient fireplaces. The large open viewing area highlights the ambiance of wood burning while the cast iron and soapstone construction generates a heat output sufficient for large areas.



Morgan featured with Matte Black finish.



FINISH OPTIONS:



Matte Black

MORGAN 8470
FEATURES AND BENEFITS

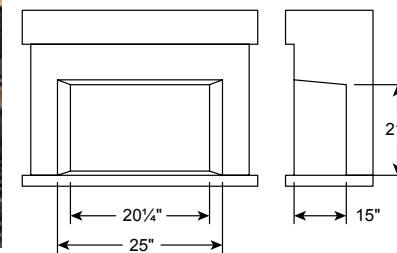
- **Soapstone-lined firebox** – extended HeatLife
- **Large front door** – easy loading and great view of the fire
- **Cast iron firebox** – unequalled durability and maximum heat output
- **Smooth firebox floor** – user friendly ash removal
- **Telescoping design** – allows a flush or extended hearth projection
- **Single lever stove control** – easy operation, consistent performance
- **Non-catalytic combustion system** – clean burning, efficient, reduces creosote build-up

SPECIFICATIONS

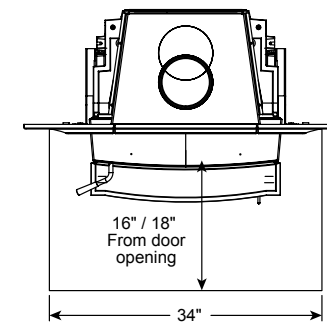
Heats up to	1,200 sq. ft.
Firebox Capacity	1.7 cu. ft.
Size	40,000 BTUs
EPA Certified	4.3 gph
Efficiency	79% LHV
Burn Time	Up to 8 hours
HeatLife	Up to 10 hours
Maximum Log Length	18"
Flue Exit	6" - 2 positions
Convection Blower	Included
Spark Screen	Optional
Surround Extension	Optional
Surround Base Caps	Optional
Mantel Shield	Optional
Actual Weight	349 lbs.



Minimum Fireplace Opening:

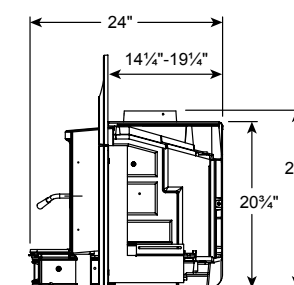
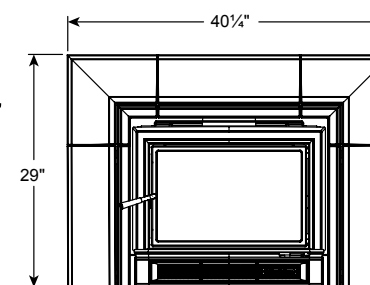
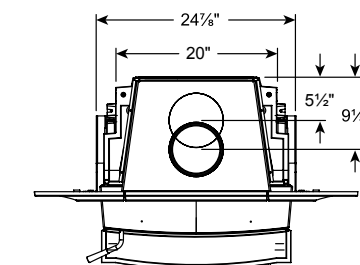


Minimum Hearth Protection:
Thermal Protection: R-value 1.0

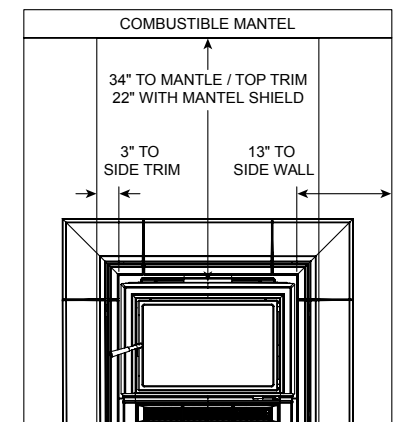


EFFICIENT HEAT
STRAIGHT FROM YOUR FIREPLACE

An attractive combination of design and function, the Morgan wood-fired insert can heat up to 1,200 square feet. The 1.7 cubic foot firebox is lined with thick soapstone panels that give the Morgan the thermal mass and HeatLife you expect from a Hearthstone.



CLEARANCES TO COMBUSTIBLE MATERIALS



MONTGOMERY

EPA CERTIFIED WOOD FIREPLACE FOR NEW CONSTRUCTION



Montgomery featured with Brown Majolica Enamel finish.



FINISH OPTIONS:



Matte Black



Brown Majolica Enamel

WFP-75 8410 FEATURES AND BENEFITS

- **EPA certified zero clearance fireplace** – clean burning, efficient
- **Stacked ledgerstone interior panel** – accentuate the chiseled stone appearance of the cast iron front
- **Optional vent ducting** – distribute heat to other rooms
- **Thermostat controlled fans** – turn on and off automatically
- **Single lever stove control** – easy operation, consistent performance
- **Non-catalytic combustion system** – clean burning, efficient, reduces creosote build-up

SPECIFICATIONS

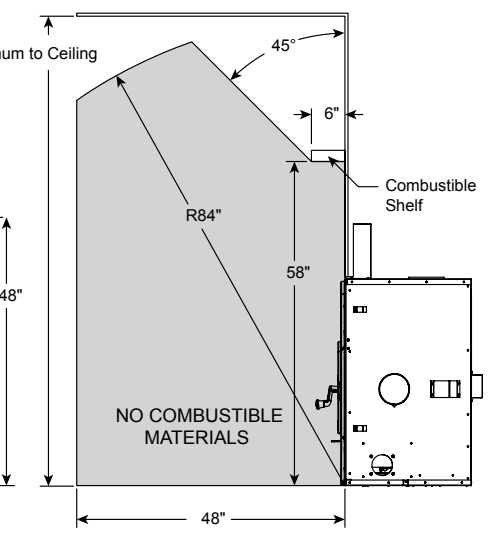
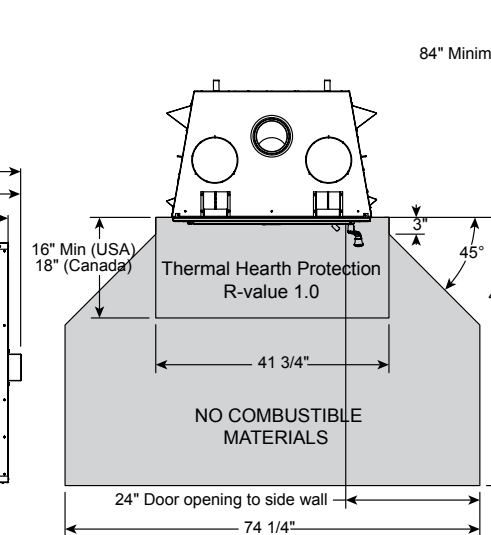
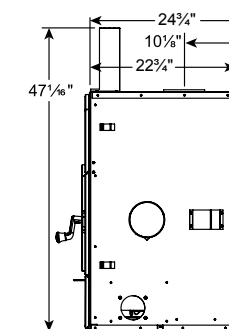
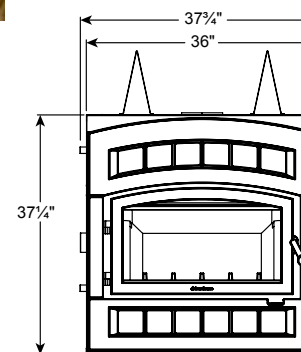
Heats up to2,000 sq ft
 Firebox Capacity2.5 cu ft *
 SizeUp to 75,000 BTUs **
 EPA Certified4.4 gph
 EfficiencyUp to 77%
 Maximum Log Length20"
 Flue Exit & DiameterTop - 6" (7" Optional)
 Type of ChimneyRefer to owner's manual
 Convection BlowerIncluded
 Spark ScreenOptional
 Gravity Convection Air KitOptional
 Forced Air Convection KitOptional
 Actual Weight400 lbs.

* Maximum firebox capacity, 1.7 cu ft behind the andiron
 ** BTU input value shown. Output: 8,000 to 40,000 BTUs



CLEARANCES TO COMBUSTIBLE MATERIALS

REFER TO THE OWNER'S MANUAL FOR FRAMING DIMENSIONS.



THE PERFECT ADDITION TO YOUR HOME

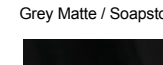
Whether you are building or renovating, the Montgomery enhances your home and offers an efficient alternative to a traditional fireplace. The European cast iron front provides aesthetic appeal, while the latest fireplace technology makes the Montgomery a smart, clean, renewable energy choice.



Bari stove featured in Gray Matte with Soapstone. Stove pipe painted gray to match stove.



FINISH OPTIONS:
Additional finish options are available by special order. Inquire with your dealer or visit www.hase.de



Black / Lava Ceramic

BARI 8170 FEATURES AND BENEFITS

- **Rotating design maximizes convenience** - view flames from around the room
- **Soapstone or ceramic tiles** - store and radiate heat
- **Multiple color options** – special order for personalization
- **Generous firebox** – burn 17" logs vertically
- **Double steel wall construction** – reduced clearances, encourages airflow, moves heat throughout home
- **Non-catalytic combustion system** – clean burning, efficient, reduces creosote build-up
- **Removable ash tray** – easy to clean, easily accessible

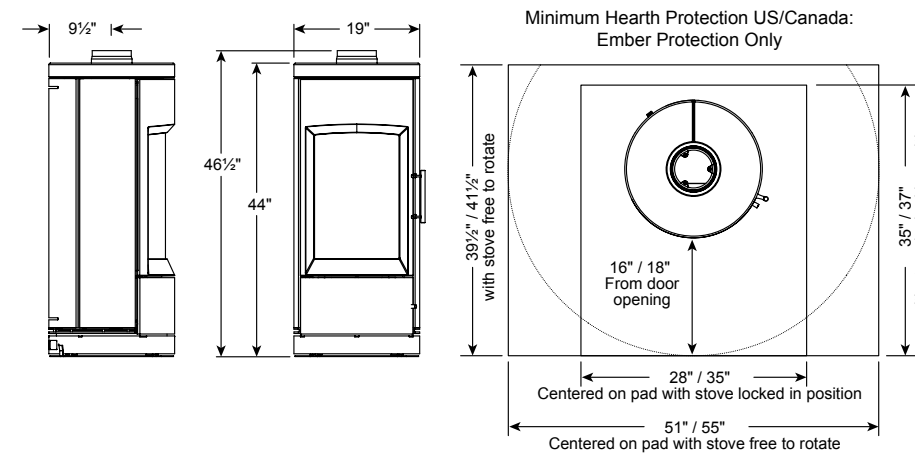
SPECIFICATIONS

Heats up to.....	1,400 sq ft
Firebox Capacity.....	1.25 cu ft
Size.....	Up to 35,000 BTUs
EPA Certified.....	3.6 gph
Efficiency.....	80% LHV
Burn Time.....	Up to 8 hours
Maximum Log Length.....	17"
Flue Exit & Diameter.....	Top - 6"
Ash Pan.....	Included
Rear Heat Shield.....	Integral
Outside Air Adaptor.....	Optional
Rotation.....	180°
Actual Weight.....	475 lbs
Alcove Certified.....	Yes
Mobile Home Certified.....	Yes

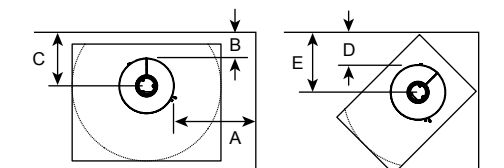
Bari stove featured in Black/Lava.

FINE EUROPEAN DESIGN – AMAZING SPECTACLE OF FIRE

The striking cylindrical shape gives the Bari modern appeal. The soapstone construction provides radiant heat and sustained warmth. To maximize enjoyment, the Bari rotates 180 degrees and provides flame viewing from any spot in the room.



CLEARANCES TO COMBUSTIBLE MATERIALS



	Single-wall pipe	Double-wall pipe
A	38"	38"
B	17" *	17" *
C	26 1/2" **	26 1/2" **
D	12" **	12" **
E	21 1/2" **	21 1/2" **

* Stove free to rotate, ** Stove locked in position



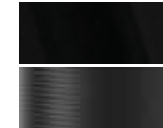
Lima stove featured in Black/Lava.

STYLE AND EFFICIENCY IN MODERN EUROPEAN DESIGN

The Lima combines style and utility to meet your needs. A ceramic construction delivers pleasing, radiant warmth. A curved glass window provides an amazing view of the fire. Rotate the Lima and extend the fire enjoyment throughout your space.

FINISH OPTIONS:

Additional finish options are available by special order. Inquire with your dealer or visit www.hase.de



Black / Lava Ceramic

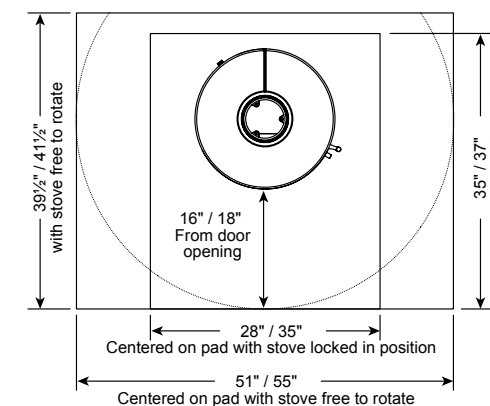
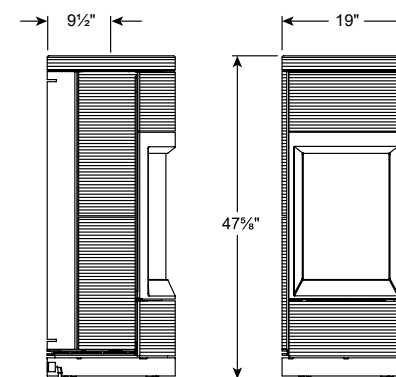


Titanium / Mojave Ceramic



Lima stove featured in Titanium/Mojave.

Minimum Hearth Protection US/Canada:
Ember Protection Only



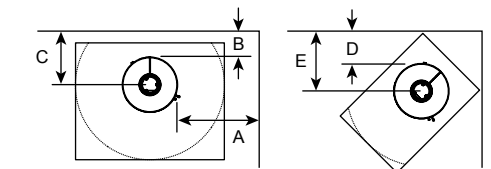
LIMA 8150 FEATURES AND BENEFITS

- **Rotating design maximizes convenience** - view flames from around the room.
- **Soapstone or ceramic tiles** - store and radiate heat
- **Multiple color options** – special order for personalization
- **Generous firebox** – burn 17" logs vertically
- **Double steel wall construction** – reduced clearances, encourages airflow, moves heat throughout home
- **Non-catalytic combustion system** – clean burning, efficient, reduces creosote build-up
- **Removable ash tray** – easy to clean, easily accessible

SPECIFICATIONS

- Heats up to1,400 sq ft
- Firebox Capacity1.25 cu ft
- SizeUp to 35,000 BTUs
- EPA Certified3.6 gph
- Efficiency80% LHV
- Burn TimeUp to 8 hours
- Maximum Log Length17"
- Flue Exit & DiameterTop - 6"
- Ash PanIncluded
- Rear Heat ShieldIntegral
- Outside Air AdaptorOptional
- Rotation180°
- Actual Weight475 lbs
- Alcove CertifiedYes
- Mobile Home CertifiedYes

CLEARANCES TO COMBUSTIBLE MATERIALS



	Single-wall pipe	Double-wall pipe
A	38"	38"
B	17" *	17" *
C	26 1/2" **	26 1/2" **
D	12" **	12" **
E	21 1/2" **	21 1/2" **

* Stove free to rotate, ** Stove locked in position



Tula stove featured in Charcoal.



FINISH OPTIONS:



Charcoal



Umбра



Tula stove featured in Umбра.

TULA 8190
FEATURES AND BENEFITS

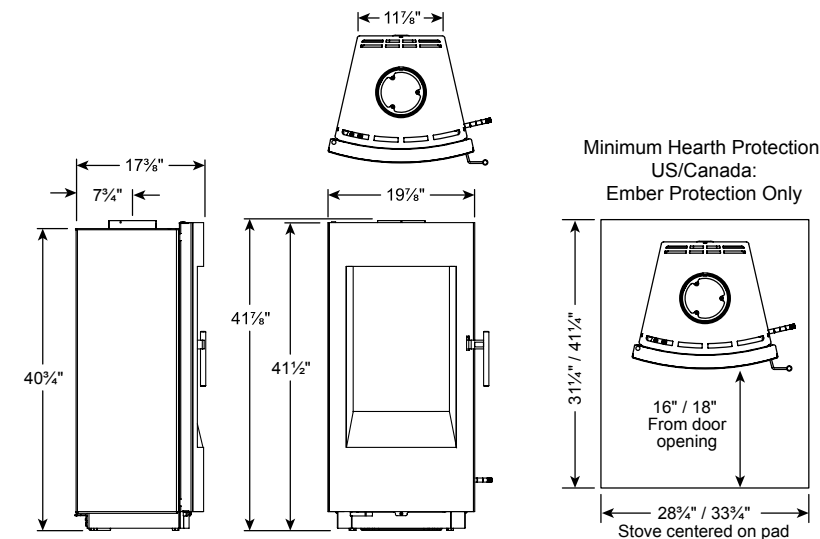
- **Ultra high efficiency of 88%** – reduces heating costs
- **Generous firebox** – burn 17" logs vertically
- **Double steel wall construction** – reduced clearances, encourages airflow, moves heat throughout home
- **Non-catalytic combustion system** – clean burning, efficient, reduces creosote build-up
- **Removable ash tray** – easy to clean, easily accessible

SPECIFICATIONS

- Heats up to 1,200 sq ft
- Firebox Capacity 1.15 cu ft
- Size Up to 30,000 BTUs
- EPA Certified 2.6 gph
- Efficiency 88% LHV
- Burn Time Up to 6 hours
- Maximum Log Length 17"
- Flue Exit & Diameter Top - 6"
- Ash Pan Included
- Rear Heat Shield Integral
- Outside Air Adaptor Optional
- Actual Weight 291 lbs
- Alcove Certified Yes
- Mobile Home Certified Yes

**THE PERFECT BALANCE OF
FORM AND FUNCTION**

Compact and easy-to-operate, the Tula easily fits into any living space and lifestyle. A unique glass frame offers a large viewing area. EPA-certified for its clean burn, the Tula produces a clean and efficient flame.



CLEARANCES TO COMBUSTIBLE MATERIALS

	Single-wall pipe, no rear heat shield	Double-wall pipe, with rear heat shield
A	15"	15"
B	12"	7"
C	20 1/2"	14 1/2"
D	11"	11"
E	20 1/2"	20 1/2"

MANCHESTER

PELLET STOVE



Manchester Pellet stove featured in Brown Majolica Enamel.



FINISH OPTIONS:



Matte Black



Brown Majolica Enamel



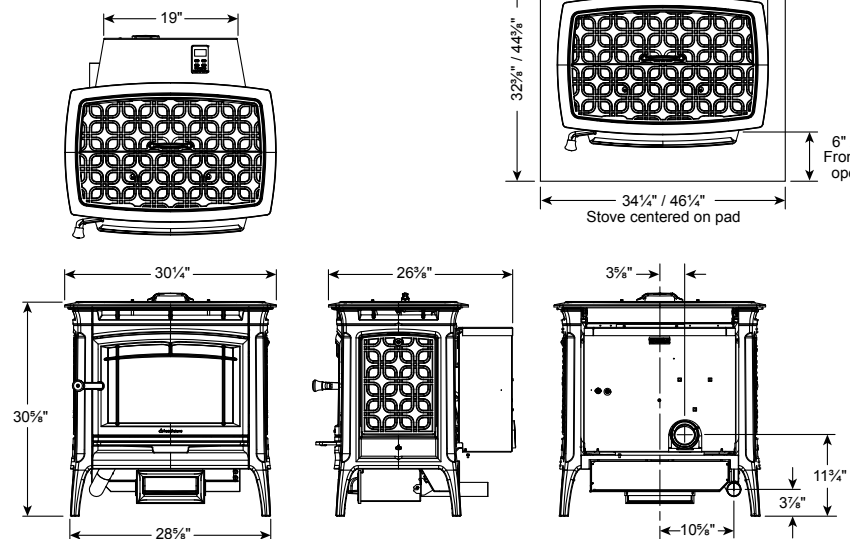
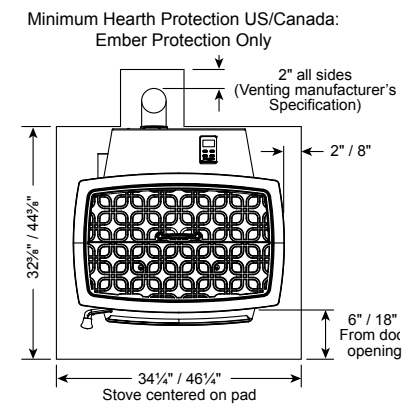
Manchester Pellet stove featured in Matte Black.

MANCHESTER PELLET 8330 FEATURES AND BENEFITS

- **High-efficiency tube heat exchanger** – maximizes heat transfer to your home
- **High-quality fans and few moving parts** – quiet operation
- **Oval burn pot** – creates an unparalleled flame
- **Finished firebox interior** – enhances the flame picture
- **Automated control system** – self adjusts the combustion settings
- **Automatic cleaning cycles** – minimize manual cleaning

SPECIFICATIONS

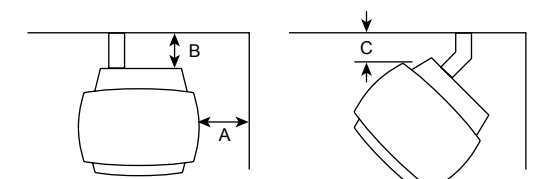
Heats up to	2,000 sq ft
Burn Rate Range	1.8 to 6.0 lbs per hour
Size	15,300 to 51,000 BTUs
EPA Rating	1.3 gph
Efficiency	87%
Hopper Capacity	Up to 60 lbs.
Vent Size	3" exit, 4" recommended
Outside Air Inlet	2 inch diameter
EZ Comfort Control	Included
Ash Pan	Included
Convection Blower	Included
Electrical Rating	120 volts, 60Hz, 4Amps
Actual Weight	385 lbs
Alcove Certified	Yes
Mobile Home Certified	Yes



FINE-LINED EUROPEAN CAST IRON COMPLEMENTED BY PROVEN TECHNOLOGY

The Manchester Pellet brings you convenience and advanced technology in an attractive Hearthstone cast iron design. With a generous heat output and a low EPA emission rating of 1.3 gph, the Manchester is one of the most efficient and clean burning pellet stoves in the industry.

CLEARANCES TO COMBUSTIBLE MATERIALS



	Horizontal Vent	Vertical Vent
A	6"	6"
B	2"	Determined by Vent Manufacturer
C	1"	Determined by Vent Manufacturer

HERITAGE PELLET STOVE



Heritage Pellet featured in Brown Majolica Enamel and Sahara Sandstone.



FINISH OPTIONS:



Brown Majolica Enamel/
Sahara Sandstone



Matte Black / Soapstone



Heritage Pellet featured in Matte Black and Polished Soapstone.

Minimum Hearth Protection US/Canada:
Ember Protection Only

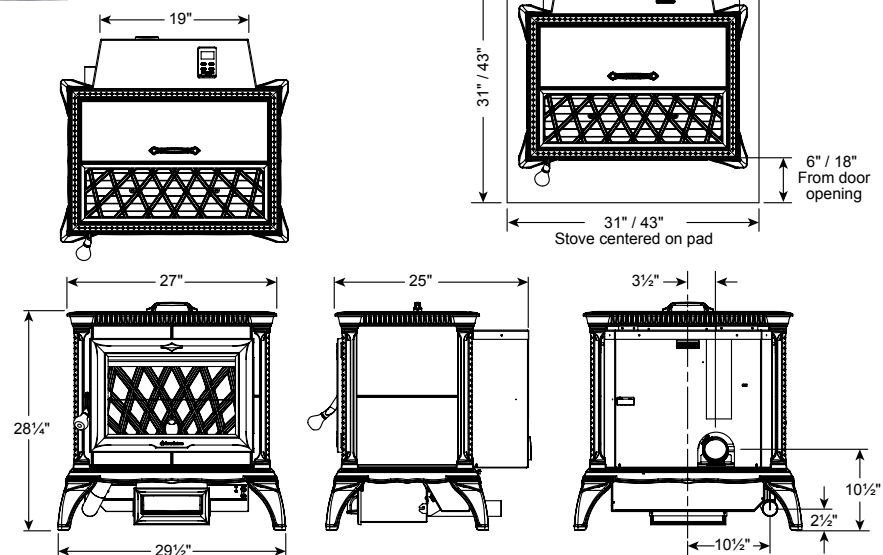
2" all sides
(Venting manufacturer's
Specification)

2" / 8"

31" / 43"

6" / 18"
From door
opening

31" / 43"
Stove centered on pad



THE ALLURE OF CAST IRON AND STONE IN A HIGH PERFORMANCE PELLET STOVE

The Heritage Pellet offers the convenience and sustainability of pellet burning with exceptional aesthetic appeal. High efficiency performance lowers fuel consumption, while high heat output enables the Heritage Pellet to heat up to 2,000 square feet.

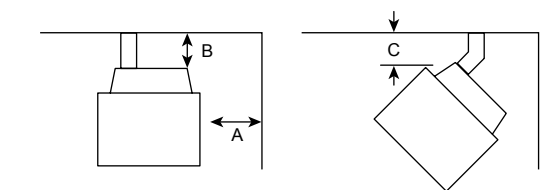
HERITAGE PELLET 8091 FEATURES AND BENEFITS

- **High-efficiency tube heat exchanger** – maximizes heat transfer to your home
- **High-quality fans and few moving parts** – quiet operation
- **Oval burn pot** – creates an unparalleled flame
- **Finished firebox interior** – enhances the flame picture
- **Automated control system** – self adjusts the combustion settings
- **Automatic cleaning cycles** – minimize manual cleaning

SPECIFICATIONS

- Heats up to 2,000 sq ft
- Burn Rate Range 1.8 to 6.0 lbs per hour
- Size 15,300 to 51,000 BTUs
- EPA Rating 1.3 gph
- Efficiency 87%
- Hopper Capacity Up to 50 lbs.
- Vent Size 3" exit, 4" recommended
- Outside Air Inlet 2 inch diameter
- EZ Comfort Control Included
- Ash Pan Included
- Convection Blower Included
- Electrical Rating 120 volts, 60Hz, 4Amps
- Actual Weight 385 lbs
- Alcove Certified Yes
- Mobile Home Certified Yes

CLEARANCES TO COMBUSTIBLE MATERIALS



	Horizontal Vent	Vertical Vent
A	6"	6"
B	2"	Determined by Vent Manufacturer
C	1"	Determined by Vent Manufacturer

DEVA

CAST IRON WOOD COOKSTOVE



FINISH OPTIONS:



Black High-Gloss Enamel

DEVA 8220 FEATURES AND BENEFITS

- **2.47 cubic foot oven (17.25" W x 15"H x 17" D)** – large enough to cook a 20 pound turkey
- **Large window** – easy to monitor cooking
- **Vitreoceramic cook top** – easy to clean, efficient heat transfer
- **Oven temperature control** – simple operation, easy to control, consistent
- **Centrally located thermometer** – easy visibility, precise temperature control
- **Single lever stove control** – easy operation, consistent performance

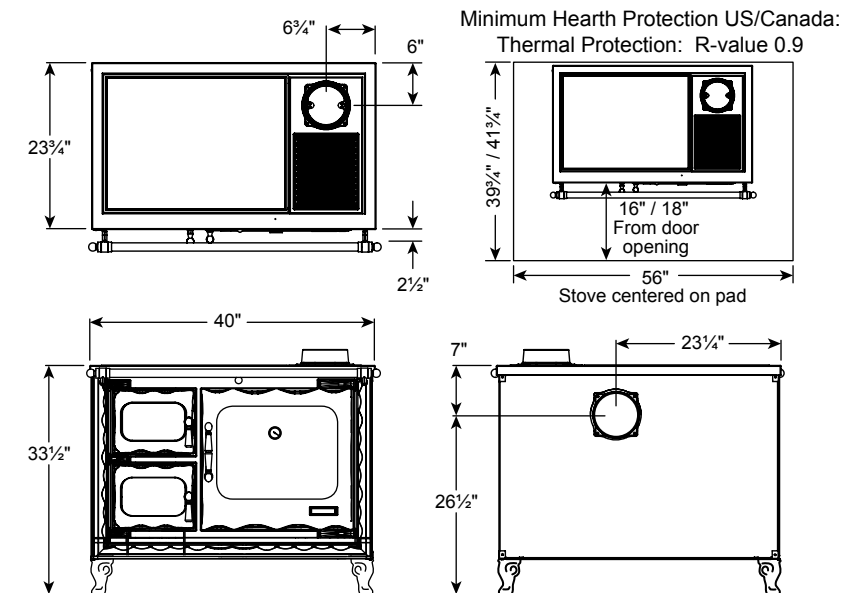


SPECIFICATIONS

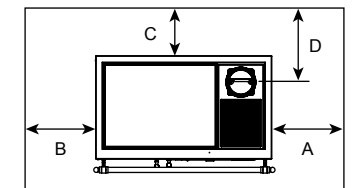
Firebox Capacity	1.6 cu ft
Size	Up to 46,000 BTUs
EPA Rating	Exempt
Maximum Log Length	17"
Flue Exit & Diameter	Top or Rear - 6"
Oven Capacity	2.5 cu ft
Ash Pan	Included
Actual Weight	484 lbs

CLASSIC GOOD LOOKS, CONTEMPORARY PERFORMANCE

With classic style and radiant heat, the Hearthstone Deva does it all: cooks your food, warms your home, and enhances your kitchen. This wood-fired cookstove features a beautiful cast-iron-with-nickel-trim construction and user-friendly controls. Handsome and well-crafted, the Deva evokes memories, nostalgia, and pleasure.



CLEARANCES TO COMBUSTIBLE MATERIALS



	Single wall connector		Double wall connector	
	Top Exit	Rear Exit	Top Exit	Rear Exit
A	10"	4"	4"	4"
B	10"	4"	4"	4"
C	16"	16"	14"	16"
D	21 1/2"	N/A	19 1/2"	N/A

	EQUINOX	MANSFIELD	HERITAGE	PHOENIX	HOMESTEAD	
SPECIFICATIONS						
Firebox capacity (1)	4.0 cf	3.2 cf	2.3 cf	2.2 cf	2.0 cf	
Maximum log length	25"	21"	21"	21"	21"	
Flue exit & diameter	top or rear – 8"	top – 6"	top or rear – 6"	45° – 6"	top or rear – 6"	
Ash pan	included	included	included	included	included	
Blower	optional	optional	optional	optional	optional	
Mobile-home certified	yes	yes	yes	yes	yes	
Alcove certified (2)	yes	yes	yes	yes	yes	
Actual weight (lbs)	689	550	475	425	380	
Shipping weight (lbs)	774	575	500	470	440	
PERFORMANCE						
Emissions	3.1 gph	2.9 gph	2.8 gph	2.4 gph	1.9 gph	
Heat output BTUs (3)	120,000	80,000	55,000	60,000	50,000	
Efficiency (4)	82%	77.4%	81%	75%	83.5%	
Heating capacity up to (5)	3,500 sq. ft.	2,500 sq. ft.	1,900 sq. ft.	2,000 sq. ft.	1,800 sq. ft.	
Burn time up to	12 hours	10 hours	8 hours	8 hours	8 hours	
HeatLife™ up to (6)	16 hours	14 hours	12 hours	12 hours	12 hours	
CLEARANCES (7)						
Side of stove to side wall	S	21"	18"	17"	20"	23"
	D	19"	18"	15" *	16"	16"
Back of stove to back wall	S	21"	19"	16"	25"	26"
	D	6"	8"	7"	13"	7"
Corner of stove to side wall	S	15"	14"	12"	18"	18"
	D	13½"	14"	11"	12"	12"
Minimum hearthpad size US inches (9)	48" W x 41½" D	34" W x 40" D	47" W x 37 ½" D	42" W x 42" D	41" W x 41" D	
Minimum hearthpad size Canada inches (9)	56" W x 48" D	40½" W x 48" D	52½" W x 42" D	42" W x 44" D	41" W x 43" D	
Minimum hearthpad size Canada cm (9)	143 cm x 122 cm D	103 cm x 122 cm	134 cm x 107 cm	107 cm x 112 cm	105 cm x 110 cm	
Minimum Hearth Protection	R-value 1.0	Ember Protection	Ember Protection	R-value 1.0	Hearthmount 6.6	
					Freestanding 2.5	

S Single-wall pipe, no heat shield

D Double-wall pipe, w/ rear heat shield

* Non-door side -or- locked side door

	CASTLETON	TRIBUTE	MANCHESTER	SHELBURNE	CRAFTSBURY	
SPECIFICATIONS						
Firebox capacity (1)	1.9 cf	1.2 cf	2.9 cf	2.0 cf	1.5 cf	
Maximum log length	18"	16"	24"	20"	17"	
Flue exit & diameter	top or rear – 6"	top – 6"	top or rear – 6"	top or rear – 6"	top or rear – 6"	
Ash pan	no	no	included	included	included	
Optional blower kit	optional	optional	optional	optional	optional	
Mobile-home certified	yes	yes	yes	yes	yes	
Alcove certified (2)	yes	yes	yes	yes	yes	
Actual weight (lbs)	464	318	515	400	285	
Shipping weight (lbs)	500	358	550	425	315	
PERFORMANCE						
Emissions	2.7 gph	3.0 gph	3.0 gph	2.1 gph	3.8 gph	
Heat output BTUs (3)	45,000	36,000	78,000	60,000	40,000	
Efficiency (4)	78%	80%	80%	80%	81%	
Heating capacity up to (5)	1,500 sq. ft.	1,000 sq. ft.	2,400 sq. ft.	1,800 sq. ft.	1,300 sq. ft.	
Burn time up to	8 hours	5 hours	12 hours	8 hours	6 hours	
HeatLife™ up to (6)	10 hours	7 hours	14 hours	10 hours	7 hours	
CLEARANCES (7)						
Side of stove to side wall	S	20"	16 ½"	18"	18"	14"
	D	15"	16 ½"	16" (8)	21"	14"
Back of stove to back wall	S	18"	19"	16"	24"	18"
	D	6"	8"	6" (8)	12"	6"
Corner of stove to side wall	S	10"	17"	9"	13"	17"
	D	10"	7"	9"	6"	10"
Minimum hearthpad size US inches (9)	31½" W x 36½" D	28⅞" W x 31⅞" D	48" W x 36¾" D	36" W x 45" D	38½" W x 41" D	
Minimum hearthpad size Canada inches (9)	37½" W x 44½" D	38" W x 40⅞" D	56" W x 44" D	40½" W x 47" D	38½" W x 43" D	
Minimum hearthpad size Canada cm (9)	95 cm x 113 cm	97 cm x 102 cm	142 cm x 112 cm	103 cm x 119 cm	98 cm x 109 cm	
Minimum Hearth Protection	Ember Protection	R-value 0.6	Ember Protection	R-value 0.8	Ember Protection	

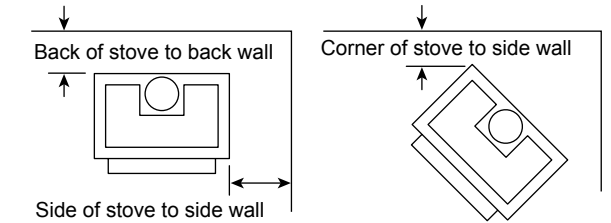
Note: Always refer to the Hearthstone Owner's Manual and the local authority having jurisdiction in your area for the specific installation requirements for your product.

	BARI	LIMA	TULA	MANCHESTER PELLET	HERITAGE PELLET	DEVA	
SPECIFICATIONS							
Firebox capacity (1)	1.25 cu. ft	1.25 cu. ft	1.15 cu. ft.	Hopper– 60lbs	Hopper– 50lbs	1.6 cu. ft	
Maximum log length	17"	17"	17"	N/A	N/A	17"	
Flue exit & diameter	top – 6"	top – 6"	top – 6"	rear – 3"	rear – 3"	top or rear – 6"	
Ash pan	included	included	included	included	included	included	
Optional blower kit	no	no	no	included	included	no	
Mobile-home certified	yes	yes	yes	yes	yes	no	
Alcove certified (2)	yes	yes	yes	yes	yes	no	
Actual weight (lbs)	475	475	291	385	385	484	
Shipping weight (lbs)	-	-	-	465	465	-	
PERFORMANCE							
Emissions	3.6 gph	3.6 gph	2.6 gph	1.3 gph	1.3 gph	exempt	
Heat output BTUs (3)	35,000	35,000	30,000	15,300 – 51,000	15,300 – 51,000	46,000	
Efficiency (4)	80%	80%	88%	87%	87%	-	
Heating capacity up to (5)	1,400 sq. ft.	1,400 sq. ft.	1,200 sq. ft.	2,000 sq. ft.	2,000 sq. ft.	-	
Burn time up to	8 hours	8 hours	6 hours	1.8 – 6.0 lbs/hr	1.8 – 6.0 lbs/hr	-	
HeatLife™ up to (6)	N/A	N/A	N/A	N/A	N/A	N/A	
CLEARANCES (7)							
Side of stove to side wall	S	38"	38"	15"	6"	6"	10"
	D	38"	38"	15"	N/A	N/A	4"
Back of stove to back wall	S	17" *	17" *	12"	2"	2"	16"
	D	17" *	17" *	7"	N/A	N/A	14"
Corner of stove to side wall	S	12" **	12" **	11"	1"	1"	-
	D	12" **	12" **	11"	N/A	N/A	-
Minimum hearthpad size US inches (9)	51" W x 39½" D	51" W x 39 ½" D	28¾"W x 31¼"D	34¼"W x 32⅝"D	31" W x 31" D	56" W x 39¾" D	
Minimum hearthpad size Canada inches (9)	55" W x 41½" D	55" W x 41 ½" D	33¾"W x 41¼"D	46¼"W x 44⅝"D	43" W x 43" D	56" W x 41¼" D	
Minimum hearthpad size Canada cm (9)	140cm x 105cm	140cm x 105cm	86 cm x 104 cm	118 cm x 113 cm	110 cm x 110 cm	142 cm x 106 cm	
Minimum Hearth Protection	Ember Protection	Ember Protection	Ember Protection	Ember Protection	Ember Protection	R-value 0.9	

S Single-wall pipe, no heat shield **D** Double-wall pipe, w/ rear heat shield * Stove free to rotate, ** Stove locked in position

	CLYDESDALE	MORGAN	MONTGOMERY
SPECIFICATIONS			
Firebox capacity (1)	2.4 cu. ft.	1.7 cu. ft.	1.7 cu. ft
Maximum log length	22"-24"	18"	20"
Flue exit & diameter	top – 6"	top – 6"	top – 6"
Ash pan	no	no	no
Optional blower kit	included	included	included
Mobile-home certified	no	no	no
Alcove certified (2)	no	no	no
Actual weight (lbs)	550	349	400
Shipping weight (lbs)	585	416	-
PERFORMANCE			
Emissions	3.2 gph	4.3 gph	4.4 gph
Heat output BTUs (3)	75,000	40,000	40,000
Efficiency (4)	79%	79%	77%***
Heating capacity up to (5)	2,000 sq. ft.	1,200 sq. ft.	1,600 sq. ft.
Burn time up to	10 hours	8 hours	6 hours
HeatLife™ up to (6)	12 hours	10 hours	N/A
CLEARANCES (7)			
Door opening to side wall	12"	13"	24"
Mantel height	50"	55"	58"
Mantel height w/ shield	34"	43"	N/A
Minimum fireplace opening	23¼"H x 32½"W x 13"D	21"H x 25"W x 15"D	N/A
Minimum hearthpad size US inches (9)	38¼" W x 18" D	34" W x 16" D	41¼ W x 16" D
Minimum hearthpad size Canada inches (9)	38¼" W x 18" D	34" W x 18" D	41¼ W x 18" D
Minimum hearthpad size Canada cm (9)	98 cm x 46 cm	87 cm x 46 cm	106 cm x 46 cm
Minimum Hearth Protection	R-value 1.0	R-value 1.0	R-value 1.0

*** Optimal efficiency, not from LHV test data



(1) The amount and weight of wood contained per cubic foot of firebox volume can vary from 15 to 36 lbs. per cubic foot depending on type of wood, moisture content, packing density, and other factors. As a constant for comparison and test purposes, we are assuming 20 lbs. of seasoned hardwood per cubic foot of firebox volume.

(2) See Owner's Manual for specific alcove clearances and alcove hearthpad requirements.

(3) Heat output will vary depending on frequency of loading, the dryness and quality of wood used, packing density, and other installation variables.

(4) Efficiency measured at lower heating value (LHV).

(5) Heating capacity is an approximation dependent upon type of wood, loading configuration, floor plan, ceiling height, house construction, venting configuration, heat loss, geographic location of home, and other usage and regional variables.

(6) HeatLife™ is a trademark of Hearthstone Quality Home Heating Products and is defined as the quantity of heat stored within the thermal mass of the stove. Used here, it refers not just to burn time but to total hours of usable heat from a single load of fuel.

(7) Clearances on this page are for reference only. Refer to the Owner's Manual for exact specifications prior to installation.

(8) The Manchester rear heat shield is built in; there is an optional Close Clearance heatshield which may further reduce rear clearances to 6".

(9) See Owner's Manual for specific hearth material and R-value requirements.

Note: Always refer to the Hearthstone Owner's Manual and the local authority having jurisdiction in your area for the specific installation requirements for your product.

Warranty: Hearthstone warrants all its wood and pellet products to the original purchaser for the lifetime of the appliance to be free from defects in material and workmanship, with certain limitations as defined in our Limited Lifetime Warranty policy. See your Hearthstone dealer for complete details and a copy of our warranty policy.



 **hearthstone**

www.hearthstonestoves.com
802.888.5235



Hearthstone Quality Home Heating Products
317 Stafford Avenue
Morrisville Vermont 05661 USA

